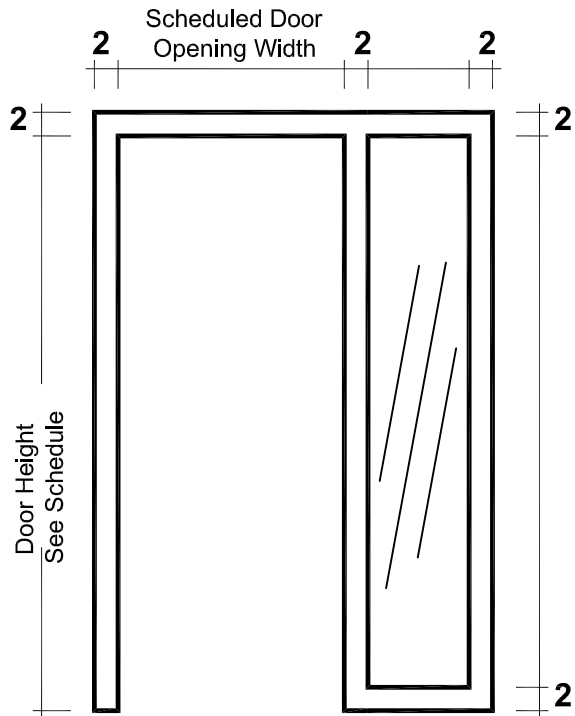


Hollow Metal Sidelite Frame (by Security Metal Products)



TYPICAL ELEVATION

TYPICAL FRAME PROFILES



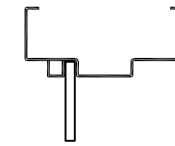
Double Rabbet



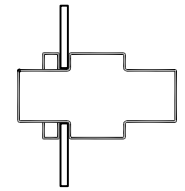
Single Rabbet



Cased Opening

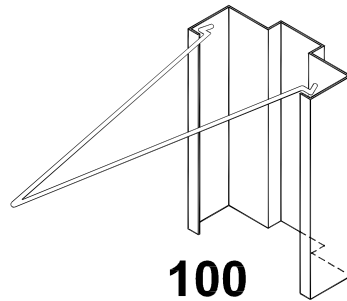


Standard Glazing



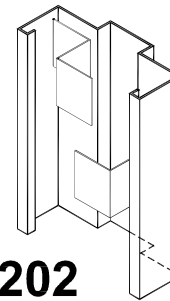
Mullion

TYPICAL FRAME ANCHORS



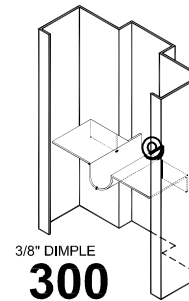
100

Masonry Anchor



202

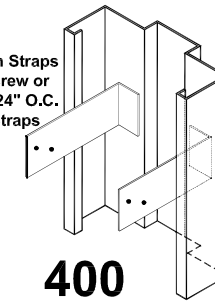
Steel Stud Anchor



300

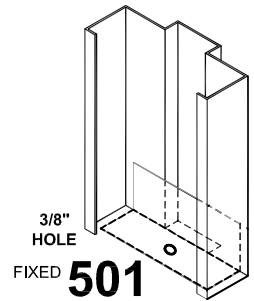
Existing Anchor

1/8" Hole in Straps
For # 8 Screw or
8d Nail @ 24" O.C.
max at Straps



400

Wood Stud Anchor

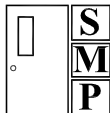


501

Floor Anchor

SPECIFICATIONS:

- 1.) Pre-assembled Welded Frames
- 2.) Galvanized Steel
- 3.) Sidelite Frames Rated up to 90 minutes
- 4.) Window Frames Rated up to 1 Hour
- 5.) 12 Gauge Reinforcement for Surface Applied Hardware
- 6.) 16, 14 & 12 Gauge Available
- 7.) Baked on Prime Paint
- 8.) 3/16" Hinge Reinforcement
- 9.) Anchors for All Wall Types & Conditions



SECURITY METAL PRODUCTS CORP.

5700 Hannum Avenue Suite # 250
Culver City, CA 90230

ph. (310) 641-6690
fx. (310) 641-6601

JOB NAME:

JOB NO.:

PAGE: